

# Geophysical Logging Probes

## Fluid Temperature.

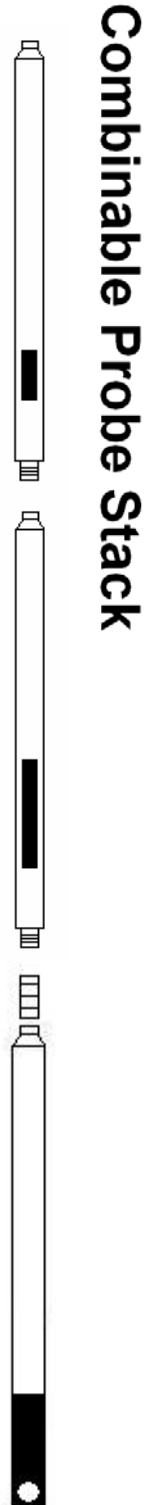
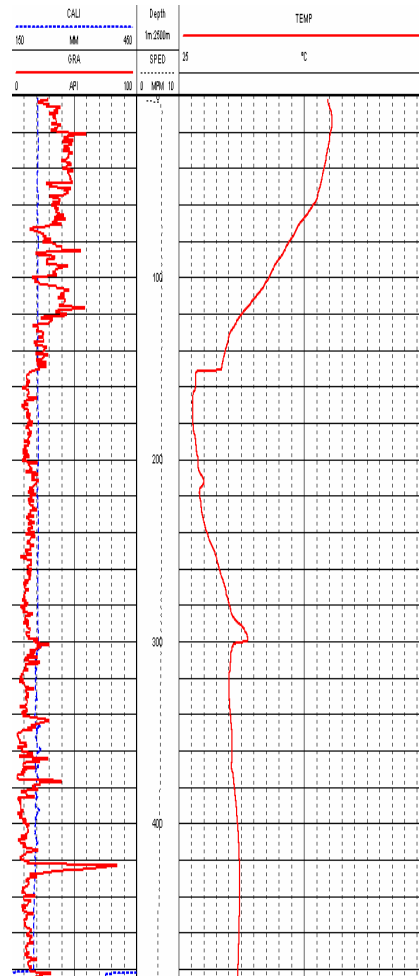
### Measurement Principle

The fluid temperature probe is used to make precise temperature measurements in a BH environment.. The temperature measurement are made used platinum resistance.

The platinum resistor is mounted in an open chamber at the base of the probe – thus allowing free flow of fluid through the detectors during data acquisition.

Suppliers of the Platinum Resistance Thermometry conform to the IEC751:1983 standard

The probe can be used on its own or within a combination "stack" of other probes. Particularly useful is the ability to combine this probe with an impeller flowmeter – for example during pumping tests.



PHYSICAL SPECIFICATIONS	
	<b>Fluid Temperature</b>
WEIGHT	2.6 kg
LENGTH	0.53m
DIAMETER	38mm
DETECTOR	PT100 (Platinum Resistance Thermometry)
RANGE	0 - 80°C
ACCURACY	+/- 0.3°C to IEC751
RESOLUTION	0.01°C
MAX. PRESSURE	20 MPa
MAX. TEMP.	80°C