

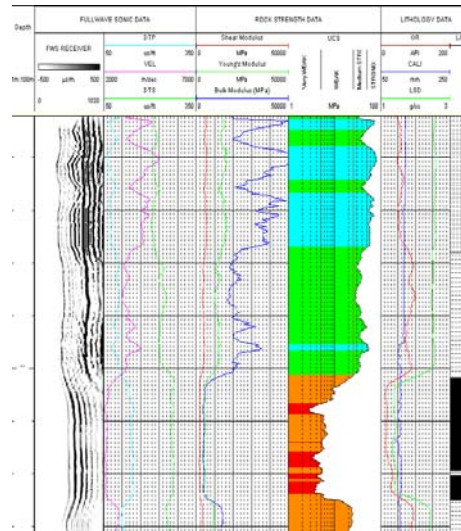
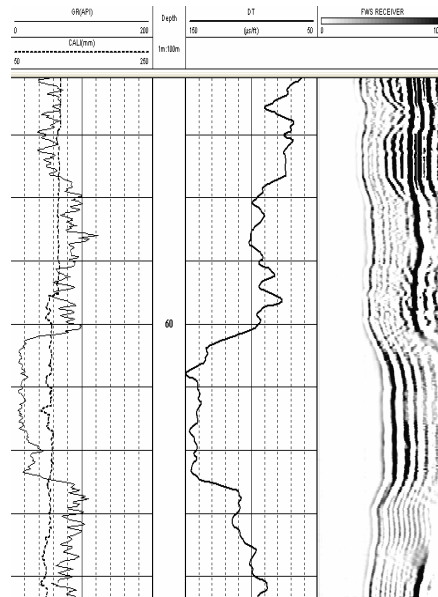
## Fullwave Sonic 1TX 4RX.

### Measurement Principle

During logging a series of high frequency impulses are emitted by the probe. Following their passage through the borehole fluid and formation, these impulses are detected by a user configurable array of receivers. At each receiver the waveform is sampled according to a set of user defined parameters (sample rate, gain etc). The user defined parameters are control by the field engineer bearing in mind the purpose of the survey.

Individual transmitter and receiver modules are available to be combined according to the purpose of the survey. For a cement bond log, a single transmitter and two receivers maybe used. For coal logging formation travel time and full waveform, one transmitter and four receivers are available.

The probe is typically run centralised and in openhole and/or cased hole according to the objectives of the survey.



Single Run

PHYSICAL SPECIFICATIONS	
WEIGHT	18 kg
LENGTH	2.60m
DIAMETER	50mm
TRANSMITTER No.	1
RECEIVER No	4 (20, 40, 60, 80cm)
RESOLUTION	12 bit
GAIN SETTINGS	16 – AGC
SAMPLE RATE	VARIABLE
MAX. PRESSURE	200 bar
MAX. TEMPERATURE	70°C