

Dual Induction.

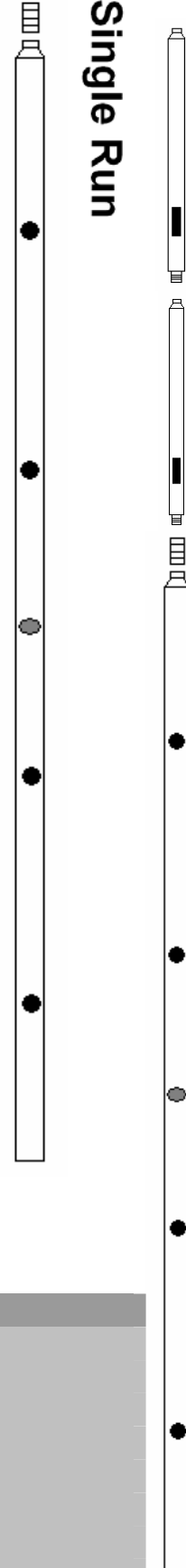
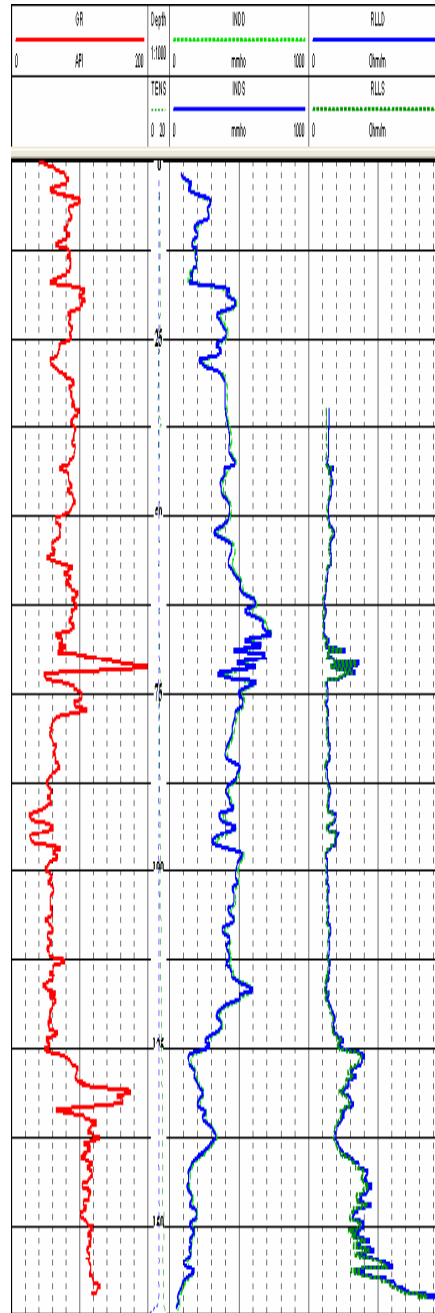
Measurement Principle

The dual induction probe generates an electromagnetic field in the vicinity of the borehole and measures the response of the formation to this applied field.

Operation

The dual induction probe provides curves of formation conductivity in resistive muds, air filled boreholes and plastic lined boreholes.

The performance of the probe is best in higher conductivity formations. The probe produces both deep and medium penetrating curves differentiating between non invaded and invaded formations.



PHYSICAL SPECIFICATIONS

WEIGHT	5.0 kg
LENGTH	1.70m
DIAMETER	50mm
TX – RX SPACING	15cm & 40cm
FREQUENCY	25 kHz
CONDUCTIVITY RANGE	1 to 3000 mS/m
MAX. PRESSURE	20 MPa
MAX. TEMP.	70°C