

## 2 Arm/3 Arm Caliper.

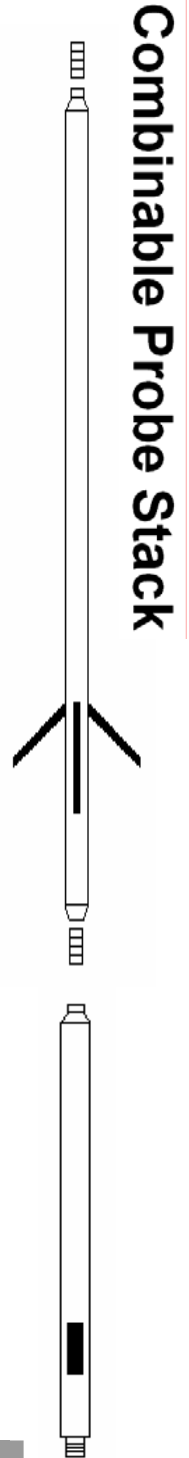
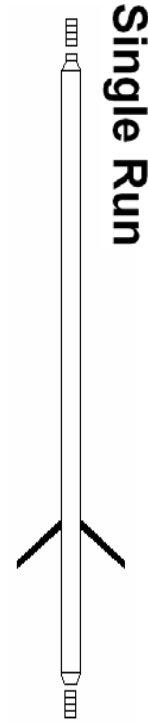
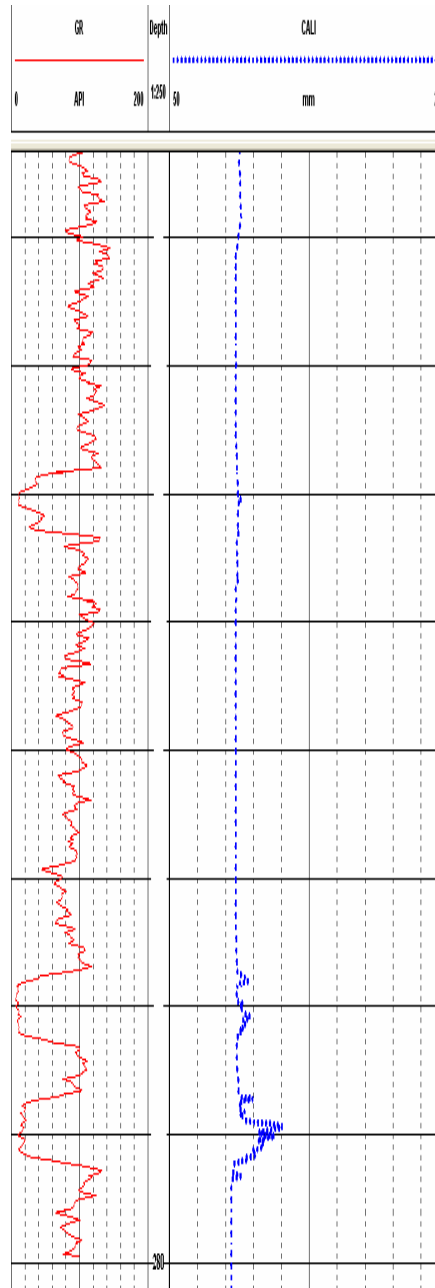
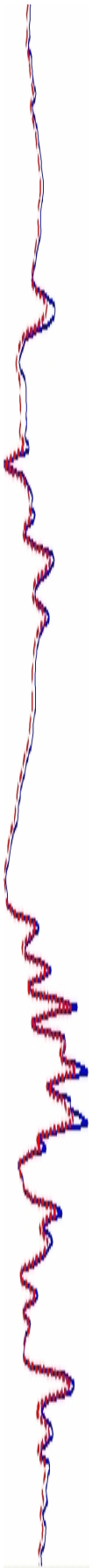
### Measurement Principle

The caliper probe is a mechanical device used to measure the diameter of a borehole and the roughness (rugosity) of the borehole wall.

The caliper probe has two options, two arms set 180° apart, or three arms set 120° apart. All caliper arms are fixed to a central mechanical rod inside the probe.

Combining two 2 arm caliper probes allows different directions of the borehole (X and Y) to be measured independently.

The probe can be used on its own or within a combination "stack" of other probes.



PHYSICAL SPECIFICATIONS		
	2 Arm Caliper	3 Arm Caliper
WEIGHT	5.5 kg	5.5 kg
LENGTH	1.15m	1.50m
DIAMETER	38mm	35mm
ACCURACY	+/- 5mm	+/- 5mm
MAX. PRESSURE	20 MPa	20 MPa
MAX. TEMP.	80°C	80°C